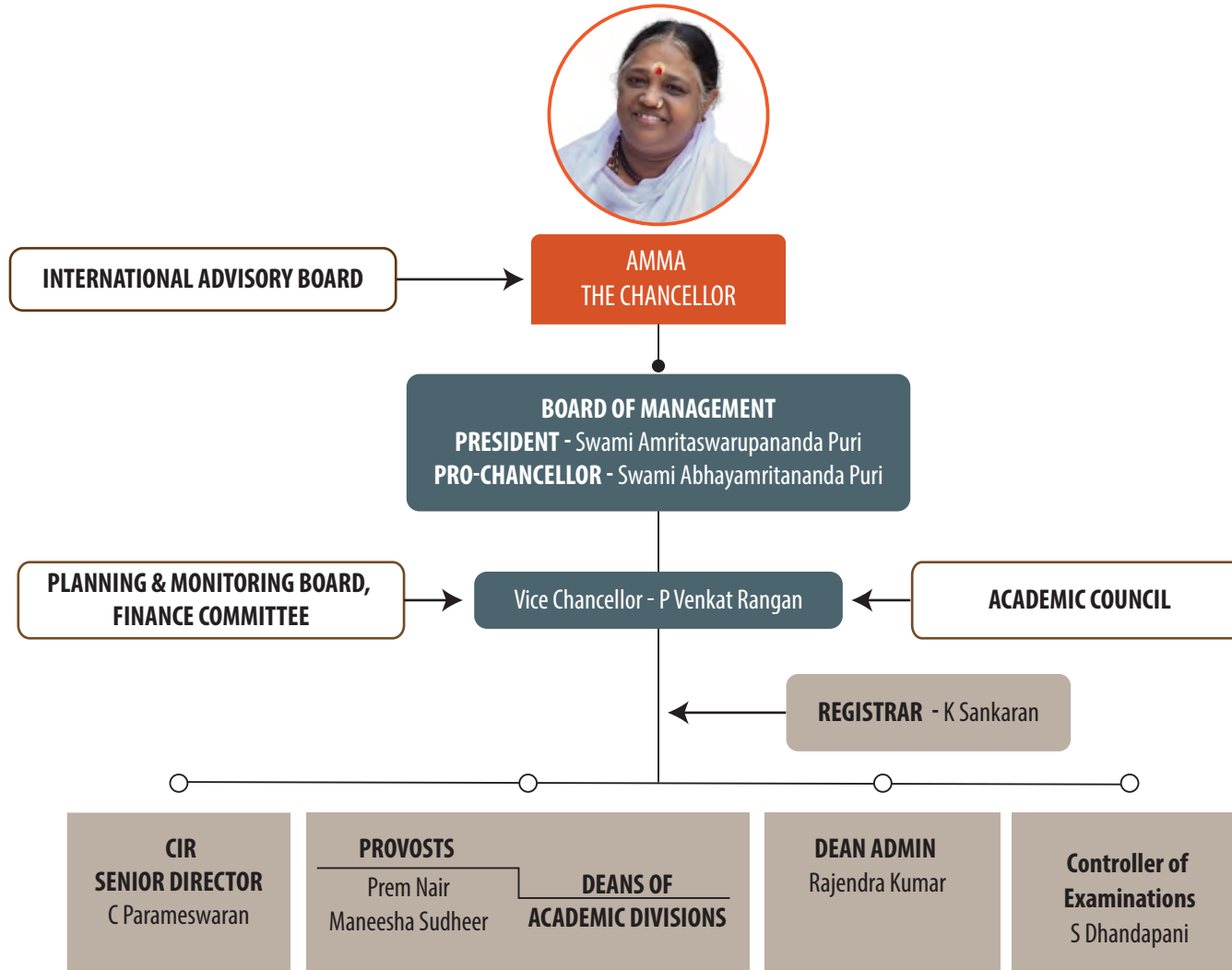


Aum Amriteswaryai Namah!

AMRITA VISHWA VIDYAPEETHAM

ORGANIZATIONAL STRUCTURE

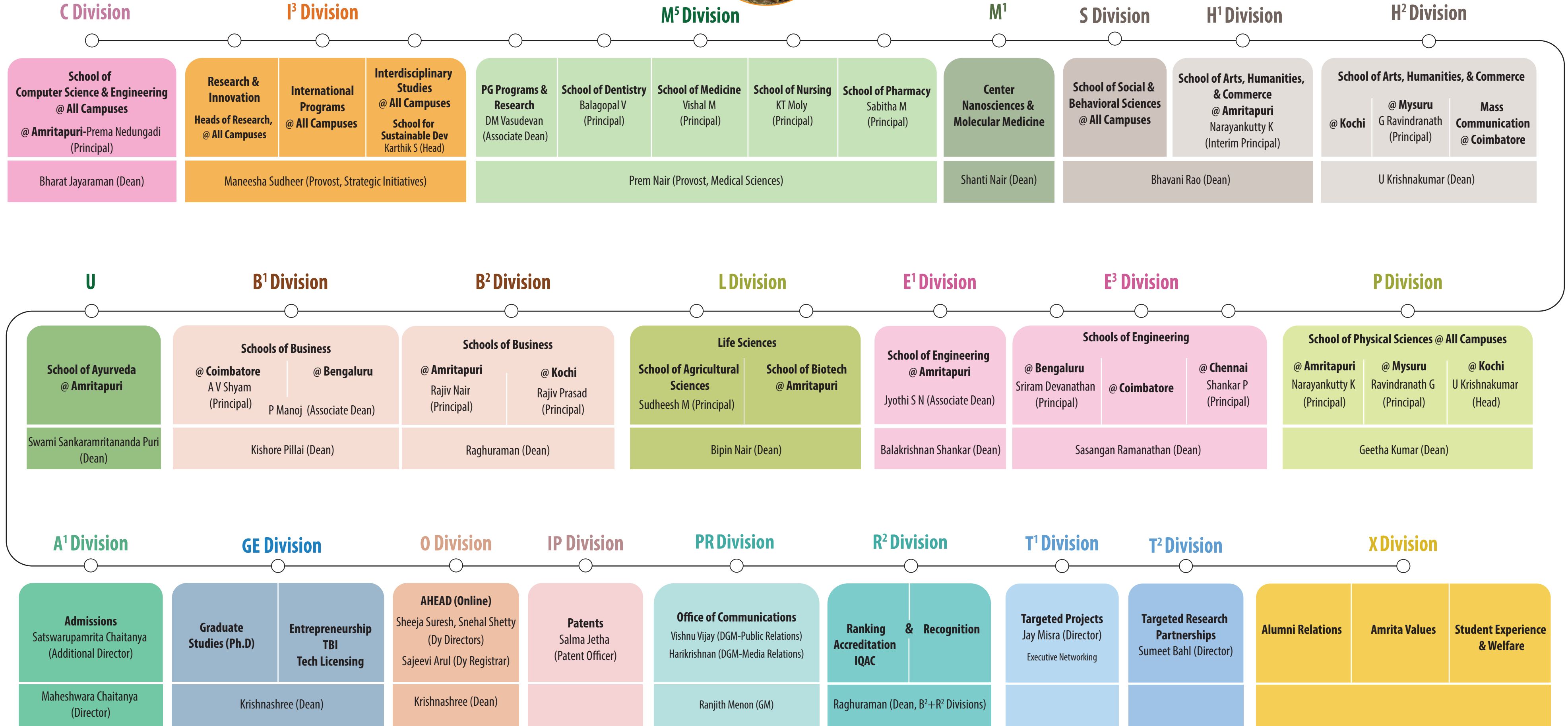


AMMA, CHANCELLOR

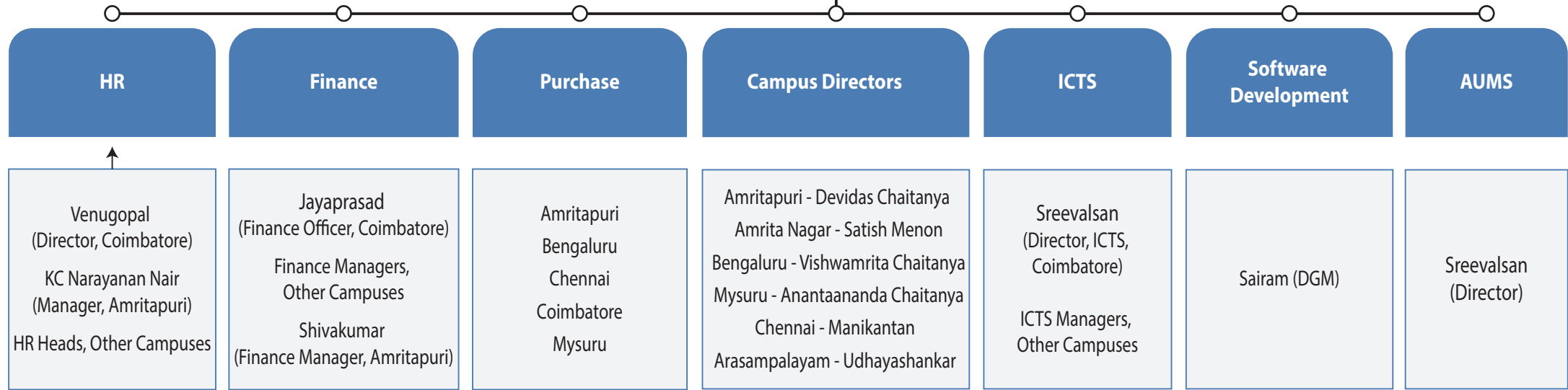


Faculties: IM - SHUB - LEEP

Ranked Divisions: C - IM - SHB - LEEP



DEAN OF ADMINISTRATION
Rajendra Kumar



Campus Committee for Student Experience & Welfare

Chairperson

Head of Largest Academic Unit of the Campus

Amritapuri - Balakrishnan Shankar | Amrita Nagar - Sasangan | Bengaluru - Sriram D | Kochi, AIMS - Prem Nair
Kochi, ASAS - U Krishnakumar | Mysuru - Ravindranath | Chennai - Sankar | Arasampalayam - Sudheesh M

Members

Heads of all Schools in the Campus, Campus Director

Head / Professor in-charge of Student affairs, Chief Wardens

Women Representatives, Student Representatives

Any other members as decided by the chairman

Scope - Includes, but not limited to:

- Grievance redressal
- Anti-ragging
- Gender issues including equity, prevention of harassment
- Student Disciplinary Issues
- Support for differently abled
- Any other matter of relevance
- Social, cultural and leisure activities. celebration of national and international commemorative days, events and festivals
- Sports activities
- Hostel and mess - Student related matters
- Counselling
- Common rooms
- Monitor adherence to the code of conduct by the students

Campus Development Committee

Chairperson

Campus Director

Amritapuri - Devidas Chaitanya | Amrita Nagar - Satish Menon | Bengaluru - Vishwamrita Chaitanya | Kochi, AIMS - Suresh Kumar
Kochi, ASAS - U Krishnakumar | Mysuru - Anantaananda Chaitanya | Chennai - Manikantan | Arasampalayam - Udhayashankar

Members

Heads of Schools

Infrastructure operational Heads

Any other members as decided by the chairman

Scope - Includes, but not limited to:

- **Safety and Security**
 - Campus Security
 - Assistive facilities for persons with disabilities (Divyangjan)
 - Provision for enquiry and information : Human assistance
- **Transport**
 - Restricted entry of automobiles
 - Use of Bicycles/ Battery powered vehicles
 - Pedestrian Friendly pathways
 - Built environment with ramps/ lifts for easy access to classrooms
 - Signage including tactile path, lights, display boards and signposts
- **Housing**
- **Non teaching staff welfare and discipline**
 - Monitor adherence to the code of conduct by the campus staff
- **Campus Cleanliness, Hygiene & Beautification**
 - Landscaping with trees and plants
 - Clean and green campus recognitions/awards
- **Infrastructure Maintenance and Development**
- **Energy**
 - Solar energy
 - Wheeling to the grid
 - Green, energy
 - Use of LED bulbs/ power efficient equipment
 - Biogas plant
 - Sensor-based energy conservation
 - environment audit
- **Water**
 - Waste water recycling
 - Borewell / Open well recharge
 - Maintenance of water bodies and distribution system in the campus
 - Rain water harvesting
 - Construction of tanks and bunds
- **Waste Recycling & Management**
 - Solid,
 - liquid,
 - biomedical
 - e-waste
 - Ban on use of Plastic
 - Hazardous chemicals and radioactive waste management
 - Effluent Treatment Plant

Admissions Committee

Chairperson

Maheswara Chaitanya, Director A¹ Division

Members

Parameswaran, Satswarupananda Chaitanya, Devidas Chaitanya,
U Krishnakumar, Bipin Nair, Krishnashree, Sasangan, Manoj
(other members to be Co-opted by the Chairperson)